

**Vocational Data Sources:  
Strengths, Weaknesses and Transitions**

Todd Harden, MA, LPC, CRC, CLCP, ABVE/F  
todd@hardenconsulting.net

2019 IARP ANNUAL CONFERENCE & 25TH ANNUAL IALCP SYMPOSIUM

1

---

---

---

---

---

---

---

---

**Vocational Data Sources**

- Dictionary of Occupational Titles/Selected Characteristics of Occupations
- Occupational Requirements Survey (including Vocational Information Tool and Occupational Information System)
- O\*NET
- Occupational Outlook Survey
- County Business Patterns
- Bonus Data Sources

2019 IARP ANNUAL CONFERENCE & 25TH ANNUAL IALCP SYMPOSIUM

2

---

---

---

---

---

---

---

---

**Dictionary of Occupational Titles**

- 12,761 job titles described
- 1991 last updated in print – 1992 last updated electronically
- Data collected by Job Analysis Method – job observed and analyzed
- DOT job description includes:
  - DOT number
  - DOT job title
  - Industry Designation (maximum of 4, not an exhaustive list)
  - Guide for Occupational Exploration code
  - Strength requirement
  - General Educational Development Levels (Reasoning, Mathematical, Language)
  - Specific Vocational Preparation Level
  - Date Job Last Updated

2019 IARP ANNUAL CONFERENCE & 25TH ANNUAL IALCP SYMPOSIUM

3

---

---

---

---

---

---

---

---

**JARP** JOURNAL OF APPLIED READING PROFESSIONAL DEVELOPMENT

**211.462-010 CASHIER II (clerical) alternate titles: cash clerk; cashier, general; cashier, office; ticket clerk**  
 Receives cash from customers or employees in payment for goods or services and records amounts received. Recomputes or computes bill, itemized lists, and tickets showing amount due, using adding machine or cash register. Makes change, cashes checks, and issues receipts or tickets to customers. Records amounts received and prepares reports of transactions. Reads and records totals shown on cash register tape and verifies against cash on hand. May be required to know value and features of items for which money is received. May give cash refunds or issue credit memorandums to customers for returned merchandise. May operate ticket-dispensing machine. May operate cash register with peripheral electronic data processing equipment by passing individual price coded items across electronic scanner to record price, compile printed list, and display cost of customer purchase, tax, and rebates on monitor screen. May sell candy, cigarettes, gum, and gift certificates, and issue trading stamps. May be designated according to nature of establishment as Cafeteria Cashier (hotel & rest.); Cashier, Parking Lot (automotive ser.); Dining-Room Cashier (hotel & rest.); Service-Bar Cashier (hotel & rest.); Store Cashier (clerical); or according to type of account as Cashier, Credit (clerical); Cashier, Payments Received (clerical). May press numeric keys of computer corresponding to gasoline pump to reset meter on pump and to record amount of sale and be designated Cashier, Self-Service Gasoline (automotive ser.). May receive money, make change, and cash checks for sales personnel on same floor and be designated Floor Cashier (clerical). May make change for patrons at places of amusement other than gambling establishments and be designated Change-Booth Cashier (amuse. & rec.).  
**GOE: 07.03.01 STRENGTH: L GED: R3 M2 L2 SVP: 2 DLU: 81**  
**ONET: 43-2041.00 CASHIER, CHECKER (retail trade)**

**2019 IARP ANNUAL CONFERENCE & 25TH ANNUAL IALCP SYMPOSIUM**

4

---

---

---

---

---

---

---

---

---

---

**JARP** JOURNAL OF APPLIED READING PROFESSIONAL DEVELOPMENT

**A B C** <Previous Next > Search Contents ONET **Link to this page** About

**D E F**

**G H I** **CODE: 211.462-010** **Buy the DOT Download**

**J K L** **TITLE: CASHIER II (clerical) alternate titles: cash clerk; cashier, general;**

**M N O** **cashier, office**

**P Q R** **clerical clerk. Receives cash from customers or employees in payment for goods or services and records amounts received. Recomputes or computes bill, itemized lists, and tickets showing amount due, using adding machine or cash register. Makes change, cashes checks, and issues receipts or tickets to customers. Records amounts received and prepares reports of transactions. Reads and records totals shown on cash register tape and verifies against cash on hand. May be required to know value and features of items for which money is received. May give cash refunds or issue credit memorandums to customers for returned merchandise. May operate ticket-dispensing machine. May operate cash register with peripheral electronic data processing equipment by passing individual price coded items across electronic scanner to record price, compile printed list, and display cost of customer purchase, tax, and rebates on monitor screen. May sell candy, cigarettes, gum, and gift certificates, and issue trading stamps. May be designated according to nature of establishment as Cafeteria Cashier (hotel & rest.); Cashier, Parking Lot (automotive ser.); Dining-Room Cashier (hotel & rest.); Service-Bar Cashier (hotel & rest.); Store Cashier (clerical); or according to type of account as Cashier, Credit (clerical); Cashier, Payments Received (clerical). May press numeric keys of computer corresponding to gasoline pump to reset meter on pump and to record amount of sale and be designated Cashier, Self-Service Gasoline (automotive ser.). May receive money, make change, and cash checks for sales personnel on same floor and be designated Floor Cashier (clerical). May make change for patrons at places of amusement other than gambling establishments and be designated Change-Booth Cashier (amuse. & rec.).**

**S T U** **GOE: 07.03.01 STRENGTH: L GED: R3 M2 L2 SVP: 2 DLU: 81**

**V W X** **ONET: 43-2041.00 CASHIER, CHECKER, GENERAL**

**Y Z ?**

**2019 IARP ANNUAL CONFERENCE & 25TH ANNUAL IALCP SYMPOSIUM**

5

---

---

---

---

---

---

---


---

---

---

**JARP** JOURNAL OF APPLIED READING PROFESSIONAL DEVELOPMENT

**Selected Characteristics of Occupations Defined in the Revised Dictionary of Occupational Titles**



U.S. Department of Labor  
 Robert H. Loch, Secretary  
 Employment and Training Administration  
 1989

**2019 IARP ANNUAL CONFERENCE & 25TH ANNUAL IALCP SYMPOSIUM**

6

---

---

---

---

---

---

---

---

---

---



**JARP** INTERNATIONAL ASSOCIATION OF REHABILITATION PROFESSIONALS

## SSA's New Vision

- Occupational Information System
- Vocational Information Tool
- Occupational Requirements Survey

**2019 IARP ANNUAL CONFERENCE & 25TH ANNUAL IALCP SYMPOSIUM**

10

---

---

---

---

---

---

---

---

**JARP** INTERNATIONAL ASSOCIATION OF REHABILITATION PROFESSIONALS

## Occupational Information System (OIS)

- Replaces DOT as primary source of data for disability adjudication
- Collection of occupational data from multiple sources
- Defines work as generally performed & identifies critical tasks
- Combines data from BLS, DOL, O\*NET, MOC and OES
- Occupational Requirements Survey describes "critical tasks" of work
- OIS publication expected in 2020 and updated every 5 years
- Expect expansion to include mental and cognitive demands in 2024
- SSA will make larger policy changes to support OIS data

**2019 IARP ANNUAL CONFERENCE & 25TH ANNUAL IALCP SYMPOSIUM**

11

---

---

---

---

---

---

---

---

**JARP** INTERNATIONAL ASSOCIATION OF REHABILITATION PROFESSIONALS

## Vocational Information Tool (VIT)

- Information technology platform
- Web-based
- Publicly available
- Contains vocational information from the Occupational Information System

**2019 IARP ANNUAL CONFERENCE & 25TH ANNUAL IALCP SYMPOSIUM**

12

---

---

---

---

---

---

---

---

**Occupational Requirements Survey (ORS)**

- Data elements include
  - Physical Demands
  - Environmental Conditions
  - Education, Training, and Experience
  - Cognitive and Mental Requirements (2020 or 2024 )
- Data collected for 3 years (2016-2018)
- Data collected by SOC grouping
- BLS expects to publish data on 431 SOCs reflecting 90% of workers
- Data will NOT be collected on all 974 SOC groups ~ rare occupations

2019 IARP ANNUAL CONFERENCE & 25TH ANNUAL IALCP SYMPOSIUM

13

---

---

---

---

---

---

---

---

**Occupational Requirements Survey (ORS)  
Methodology**

Data collected at the “establishment” level – employers

- Human Resource Manager or Specialist
- Occupational Safety Managers
- Supervisors

- BLS field economists gather data by conversational interviews and descriptive documents (job descriptions and task lists)
- Contacts by personal visits, mail, telephone and email
- Data collected by:
  - 1,110 O\*NET-SOC 2010 groups (8 digits) when available
  - 840 SOC groups (six digits) otherwise

2019 IARP ANNUAL CONFERENCE & 25TH ANNUAL IALCP SYMPOSIUM

14

---

---

---

---

---

---

---

---

**Occupational Requirements Survey (ORS)  
Data**

- Duration levels: seldom, occasional, frequent, constant
- SVP – short demonstration = 4 hours or less
- Strength
  - Sedentary – less than light exertion and standing/walking 1/3 of day or less
- Revised collection procedure for 2018 data
  - First 2 years of data described work as “generally performed” in the establishment.
  - 2018 data describes only tasks related to “critical job function” (the reason the job exists)
- Excluded: Federal government; military; agricultural; private household and self-employed.

2019 IARP ANNUAL CONFERENCE & 25TH ANNUAL IALCP SYMPOSIUM

15

---

---

---

---

---

---

---

---

**O\*NET**

- Continually updated
- Data collected from survey questionnaires by “job incumbents”
- Data collected for 974 O\*NET-SOC occupations
- Does not include specific physical demands

2019 IARP ANNUAL CONFERENCE & 25TH ANNUAL IALCP SYMPOSIUM

16

---

---

---

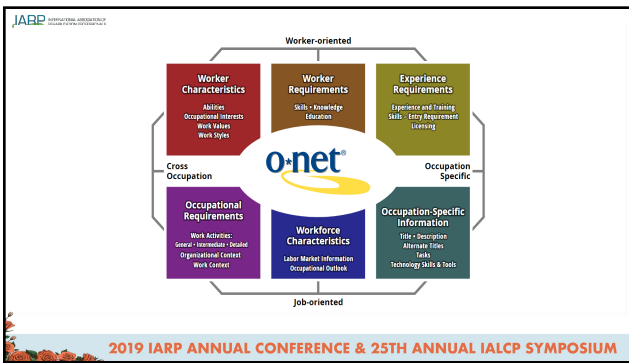
---

---

---

---

---



17

---

---

---

---

---

---

---

---

**O\*NET Assessments**

**O\*NET Resource Center**

Search for...

Data Tools Science Collection Overview Connect Sites

**O\*NET® Career Exploration Tools**

**Overview**

The O\*NET® team has designed a set of self-directed career exploration/assessment tools to help workers consider and plan career options, preparation, and transitions more effectively. They also are designed for use by students who are exploring the school-to-work transition. The assessment instruments, which are based on a “whole-person” concept, are grouped into three major families:

- O\*NET Ability Profiler
- O\*NET Interest Profiler
- O\*NET Work Importance Locator

These instruments will help individuals identify their work-related interests, what they consider important on the job, and their abilities to explore occupations that relate most closely to those attributes. Users of the tools may link to the more than 950 occupations described by the O\*NET database, as well as to occupational information in CareerOneStop. This allows individuals to make a seamless transition from assessing their interests, work values, and abilities to matching their job skills with the requirements of occupations in their local labor market.

2019 IARP ANNUAL CONFERENCE & 25TH ANNUAL IALCP SYMPOSIUM

18

---

---

---

---

---

---

---

---

**Occupational Outlook Handbook (OOH)**

- Self reported purpose is for occupational exploration
- Data reported on 325 occupational profiles
- Updated every other year
- Does not describe physical demands of jobs
- Uses SOC groupings
- Data from National Employment Matrix which combines data from...
  - OES – establishment-based data (employers)
  - Current Population Survey (CPS) – census household respondents

2019 IARP ANNUAL CONFERENCE & 25TH ANNUAL IALCP SYMPOSIUM

19

---

---

---

---

---

---

---

---

**Occupational Outlook Handbook Disclaimer**

• “The *OOH* describes the job outlook over a projected 10-year period for occupations across the nation; consequently, short-term labor market fluctuations and regional differences in job outlook generally are not discussed. Similarly, the *OOH* provides a general, composite description of jobs and cannot be expected to reflect work situations in specific establishments or localities. The *OOH*, therefore, is not intended to, and should never, be used for any legal purpose. For example, the *OOH* should not be used as a guide for determining wages, hours of work, the right of a particular union to represent workers, appropriate bargaining units, or formal job evaluation systems. Wage data in the *OOH* should not be used to compute the future loss of earnings in adjudication proceedings involving work injuries or accidental deaths.”

• <https://www.bls.gov/oooh/about/disclaimer.htm>

2019 IARP ANNUAL CONFERENCE & 25TH ANNUAL IALCP SYMPOSIUM

20

---

---

---

---

---

---

---

---

**County Business Patterns (CBP)**

- Updated annually
- Provides statistics for businesses with paid employees
- Data reported at national, state, county, metropolitan, ZIP, and Congressional District levels
- Data obtained from multiple Census Bureau programs
- Useful for studying economic activity of small areas
- Data presented by North American Industry Classification industries

2019 IARP ANNUAL CONFERENCE & 25TH ANNUAL IALCP SYMPOSIUM

21

---

---

---

---

---

---

---

---

**Bonus!! Job Number Sources**

- Occupational Employment Statistics
- Census Employment Numbers
- OOH Job Numbers

2019 IARP ANNUAL CONFERENCE & 25TH ANNUAL IALCP SYMPOSIUM

22

---

---

---

---

---

---

---

---

**Occupational Employment Statistics (OES)**

- Source – Bureau Of Labor Statistics - US Department of Labor
- Employer Survey
- Updated annually

2019 IARP ANNUAL CONFERENCE & 25TH ANNUAL IALCP SYMPOSIUM

23

---

---

---

---

---

---

---

---

**CENSUS**

- Source – Current Population Survey (CPS)
- Household Survey
- Updated monthly

2019 IARP ANNUAL CONFERENCE & 25TH ANNUAL IALCP SYMPOSIUM

24

---

---

---

---

---

---

---

---

**Occupational Outlook Handbook**

- Source – US Department of Labor
- Updated every other year

2019 IARP ANNUAL CONFERENCE & 25TH ANNUAL IALCP SYMPOSIUM

25

---

---

---

---

---

---

---

---

**Job Number Sources**

Publication	Data Source	Data Collection Method	Updated
County Business Patterns	CENSUS Programs	Extracted from Business Registry Data	Annually
Occupational Employment Statistics	Bureau of Labor Statistics	Employer Survey	Annually
CENSUS	Current Population Survey	Household Survey	Monthly
Occupational Outlook Handbook	US Department of Labor	Employer Survey (OES) Household Survey (CPS)	Every other year

2019 IARP ANNUAL CONFERENCE & 25TH ANNUAL IALCP SYMPOSIUM

26

---

---

---

---

---

---

---

---

**Job Source Comparison**

Publication	Data Size	Updated	Data Collection	Data Level	Limits
DOT/SCO	12,761 jobs	1991	On-site job analyses	DOT Title	1991 – data last updated
ORS	431 SOC groups	5 years	Employer survey	SOC groups	Groups of job. Mean SVP/physical
O*NET	974 O*NET-SOC groups	Continually	Worker questionnaires	O*NET-SOC groups	Groups of jobs – no physical demands
OOH	325 occupations	Every other year	Employers and CENSUS household info	Occupations	Undefined groups – no physical demands

2019 IARP ANNUAL CONFERENCE & 25TH ANNUAL IALCP SYMPOSIUM

27

---

---

---

---

---

---

---

---

**Cashier II - How They Compare**

OES – 18 DOT Titles	CENSUS – 19 DOT Titles	OOH
3,635,000 Full Time Jobs - 2018	1,343,000 Jobs in 2012	3.5 million jobs in 2006
Sedentary to Light	Sedentary to Medium	Notes: 27,000 are gaming or booth
1 sedentary SVP 6	1 sedentary SVP 6	cashiers; 26% found in food and
4 sedentary SVP 3	5 sedentary SVP 3	beverage stores; many jobs in
1 light SVP 5	1 light SVP 5	gas stations, department stores,
1 light SVP 4	1 light SVP 4	and other retail establishments
5 light SVP 3	5 light SVP 3	
6 light SVP 2	6 light SVP 2	
	1 medium SVP 2	
	No FT/PT data	

2019 IARP ANNUAL CONFERENCE & 25TH ANNUAL IALCP SYMPOSIUM

---

---

---

---

---

---

---

---

---

---

28

**References and Resources**

- <http://onlineresources.wvdc.net/docs/SelectedCharacteristicsSearch171110.pdf>
- <https://www.bls.gov/foia/about/occupational-information-included-in-the-ooib.htm>
- <https://www.census.gov/programs-surveys/cbs/about.html>
- <https://occupationalinfo.org/>
- [https://www.ssa.gov/disabilitysearch/occupational\\_info\\_systems.html](https://www.ssa.gov/disabilitysearch/occupational_info_systems.html)
- [https://www.ssa.gov/disabilitysearch/foia\\_project\\_faqs.html](https://www.ssa.gov/disabilitysearch/foia_project_faqs.html)
- <https://www.bls.gov/foia/documentation/projectionsmethods.htm>
- <https://www.census.gov/programs-surveys/cbs/about.html>
- [https://occupationalinfo.org/front\\_148.html](https://occupationalinfo.org/front_148.html)
- <https://www.bls.gov/foia/hom/fers/pffers.pdf>
- <https://www.onetonline.org/>
- <https://www.bls.gov/foia/>
- [https://www.ssa.gov/foia/public\\_experts/occupational\\_experts\\_OIEI\\_Handbook\\_508.pdf](https://www.ssa.gov/foia/public_experts/occupational_experts_OIEI_Handbook_508.pdf)

2019 IARP ANNUAL CONFERENCE & 25TH ANNUAL IALCP SYMPOSIUM

---

---

---

---

---

---

---

---

---

---

29